



Torrance Memorial Medical Center

**CANCER SERVICES
REPORT
2013**



TORRANCE MEMORIAL
HUNT CANCER INSTITUTE





CANCER SERVICES REPORT 2013

Commission on Cancer Standard 1.12

Hunt Cancer Institute Mission Statement

To be first in the South Bay/Peninsula communities in the provision of quality care, patient service and community support to residents experiencing cancer.

Hunt Cancer Institute Vision Statement

To provide excellent, values-driven care to cancer patients and their caregivers, we maximize quality of life opportunities through:

- *Provision of comprehensive, ethical, quality care throughout the entire continuum of cancer care*
- *Respect for individual and family values*
- *Provision of current and effective medical technologies*
- *Compassion for patients, caregivers and healthcare providers*
- *Collaboration with partners to provide access to cancer clinical trials*
- *Stewardship of resources and partnering with community agencies*

The Torrance Memorial Hunt Cancer Institute is accredited by the American College of Surgeons as a Comprehensive Community Cancer Center. Our most recent survey by the College was in April 2012 and resulted in not only achieving all the required standards but we also excelled in all standards where Commendation was available. As a result of the survey, the Torrance Memorial Hunt Cancer Institute achieved the Commission on Cancer's Outstanding Achievement Award. We were one of only 79 cancer programs nation-wide, and 3 in California, to receive this recognition.

CANCER TREATMENT QUALITY MEASURES

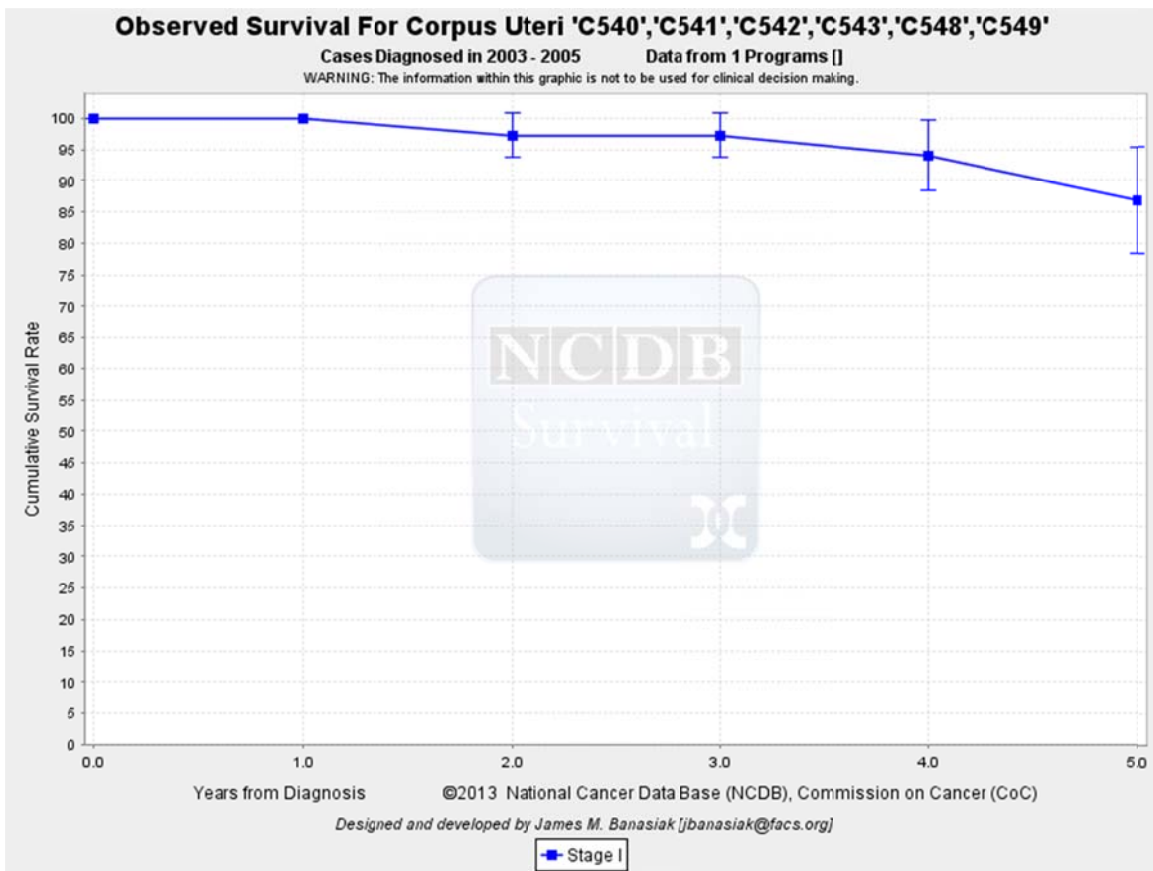
Program Performance Evaluation Using NCDB Data—Standard 4.3

Each year, the Cancer Liaison Physician utilizes NCDB data to monitor, interpret and report Torrance Memorial's performance. The information from the analysis is used to evaluate and improve quality of care. In 2013, Dr. Hima Ghanta, our Cancer Liaison Physician, conducted an evaluation of the stage at diagnosis and survival of women with endometrial cancer seen at Torrance Memorial, and compare our performance with California hospitals and hospitals nationally who report to the NCDB. Data from year 2000 to 2010, which was the most recent years available, was used.

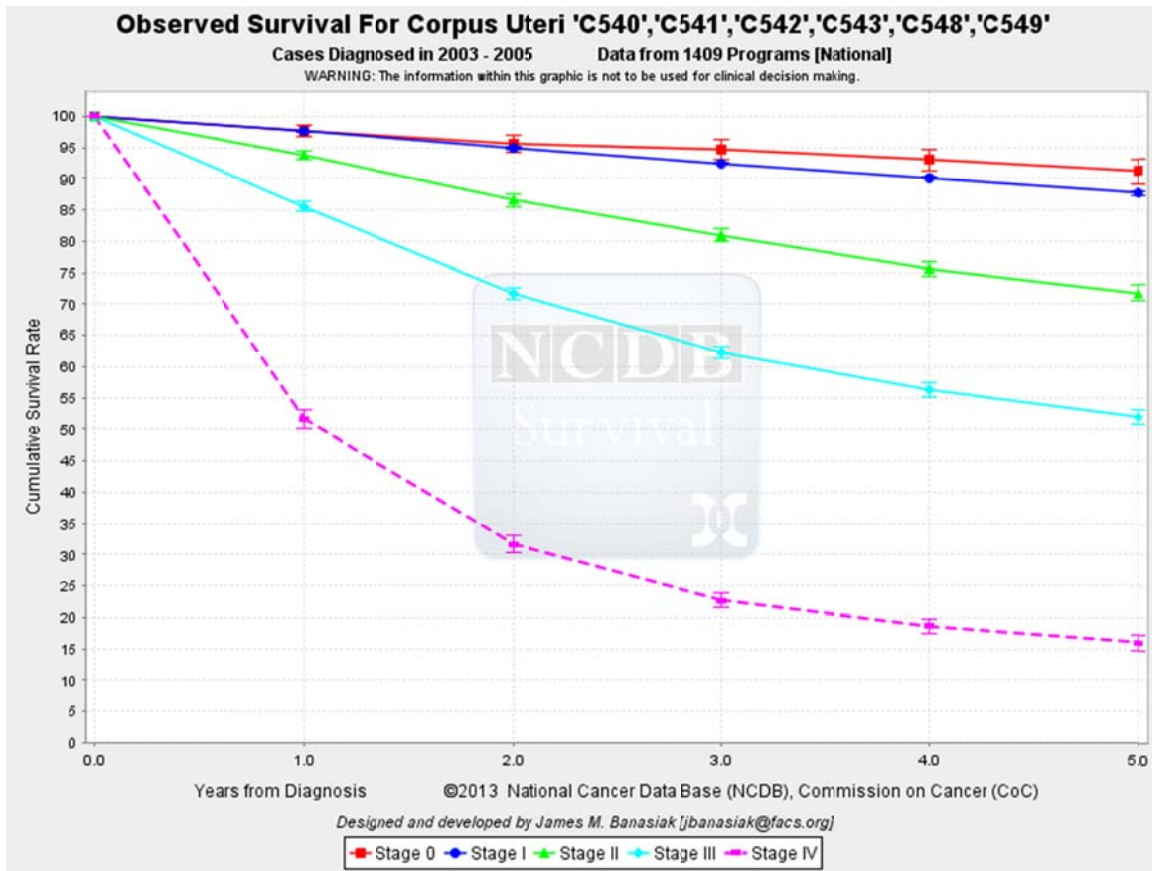
Stage of endometrial cancer diagnosed 2000-2010

Stage	TMMC	CA hospitals	All hospitals
0	0.73%	1.44%	1.21%
I	64.3%	60.35%	62.69%
II	10.02%	7.57%	7.16%
III	12.02%	12.88%	11.24%
IV	3.46%	6.17%	5.67%
Unknown	9.47%	11.6%	12.02%

This data shows that Torrance Memorial diagnoses significantly more early stage endometrial cancer compared to hospitals in California and nationwide.



Because the number of patients diagnosed at Torrance Memorial with stage 0, I, III, and IV is too low for statistical comparison, the graph shows survival of patients with stage II disease only.



National data for stage II endometrial cancer shows that Torrance Memorial’s survival rate compares favorably with national survival statistics.

Assessment of Evaluation and Treatment Planning--Standard 4.6

Each year, a physician member of the oncology committee performs a study to assess whether patients within the program are evaluated and treated according to evidence-based national treatment guidelines. In 2013, Dr. Hima Ghanta, our Cancer Liaison Physician, conducted an evaluation of the assessment and treatment of small cell lung cancer patients diagnosed at Torrance Memorial in 2011, the most recent year data was available. Dr. Ghanta conducted a chart review to compare patient management with NCCN guidelines.

The analysis showed that all patients diagnosed with small cell lung cancer received evidence-based treatment per NCCN guidelines. Smoking history was part of each patient’s health history. About 70% of the patients were current or recent smokers but none had documentation suggesting that they had been encouraged to stop. Since small cell lung cancer risk is related to cigarette smoking, NCCN guidelines recommend that patients who smoke receive smoking cessation counseling. As a result of this study, the cancer committee physicians will encourage consistent documentation of smoking