

this issue

New Patient Tower **P.1**

Daily Breeze Girl Talk **P.1**

Congratulations TCU **P.1**

Medical Executive Approvals **P.2**

Medical Staff Calendar **P.3**

Physician Roster Updates **P.4**

Welcome New Providers **P.5**



Congratulations TCU!

Staff of the Transitional Care Unit once again earned the prestigious distinction of a Five Star Rating from the Centers for Medicare & Medicaid Services. The distinction was received upon completion of a Nursing Home Survey, which rates: overall quality, health inspection, quality measures and staffing. Nice job!

Theлма McMillen Center & Betty Ford Center
Present:

Frontiers in Addiction Educational Series

"Eating Disorder Intervention: Identifying and Assessing"

Buck Runyon, MFT, LPC, CEDS
*Chief Operations Officer and
Clinical Director, Center for Discovery*

**May 18, 2010
8:30 - 11:30 am**

Torrance Memorial Medical Center
Health Conference Rooms 1 & 2



First Phase in New Patient Tower Launches

Demolition crews took down the medical office building located to the east of the hospital at 3250 Lomita Blvd., last month as preparations began in earnest for the New Main Tower. Excitement was evident as visitors and staff stopped to watch the giant cranes "eat" the building turning the three-story structure into a massive rubble pile. Construction equipment then carefully separated materials for removal. Look for more updates to come in NewsBreak and other publications. Specific questions about the tower can be e-mailed to NewMainTower@tmmc.com

Heart Health Message Reaches Many! Thousands Attend Daily Breeze Girl Talk

More than 2,500 women attended the recent Daily Breeze/Torrance Memorial Girl Talk Expo, an event aimed at reaching women with information about health, wellness, financial success, self-defense, plus fashion and food. Held at the Marriott South Bay, Torrance, the Expo featured the Third Annual Lundquist Women's Heart Health Conference, and six booths about Torrance Memorial programs and services staffed by volunteers and employees raising awareness and selling HealthLinks merchandise. In addition, the booth featured a popular attraction, "Ask a Female Physician," and book signing by cardiothoracic surgeon Kathy Magliato, M.D. The popular presenter was the keynote speaker at the Lundquist Women's Heart Health Conference. Torrance Memorial also provided sixteen health screening stations, which offered blood glucose, body mass index and blood pressure information to more than 800 guests. Thanks go to the numerous volunteers, staff and physicians who worked so hard on a Saturday to give vital health information to our community!



Medical Executive Committee

The following items were approved at the March 9, 2010 meeting of the Medical Executive Committee:

Department of Medicine

- A. Revised Department of Medicine Rules & Regulations Appendices: Appendix I – EKG Reading Panels (*Addition of Guideline*): **“If a cardiologist over-reads an EKG ordered by the Emergency Department and the findings are significantly different than from the computer readings, the cardiologist must appropriately inform the ED physician of the results.”**

Department of Obstetrics & Gynecology

- A. Physician Post Vaginal Delivery Notes
- B. Removal of the Reproduction Endocrinology & Infertility Physicians from the GYN ER Call Panel

Credentials Committee – Approvals filed in Medical Staff Services – please see Toni Woodard.

Emergency Department Committee

- A. Revised Emergency Department Rules & Regulations; Article XI – Contract Emergency Physician Responsible for 24-Hour Coverage Section B. Proctoring Protocol for Emergency Physician Applicants
 3. ~~Active or Associate Staff Members may proctor~~ **Members of the medical staff with unrestricted privileges shall be eligible to serve as proctors.**
 4. The Medical Director(s) of the Emergency Department will evaluate proctoring information and release the physician when ~~he feels~~ **it is determined that** proctoring has been satisfactorily completed. **If an initial appointee or a member exercising new clinical privileges fails within one (1) year to complete proctoring as required, then the member shall be deemed to have voluntarily surrendered those specific privileges.**

Section C. Duties of Emergency Room Physicians

2. Respond to CODE BLUE Calls on inpatients and take charge in supervising Primary Team.

Infection Control/P&T Committee

- A. TMMC Interchange List
- B. Samsca Usage Criteria
- C. Formulary Review: Samsca; Cyklokapron; Emend; Plegisol; Vibativ
- D. 2010 Medication Error Reduction Plan
- E. Pharmacy Policy/Procedure entitled, “Order Clarification”
- F. Division of Nursing Infection Control Policy/Procedure entitled, “Aerosol Transmissible Disease (ATD) Exposure Control Plan”

MONDAY	TUESDAY	WEDNESDAY	THURSDAY	FRIDAY
			1 7:00a Breast Tumor Board...WT-Aud 7:30a Tumor Board.....WT-D 12:30p MSPI.....WT-D	2 7:30a IRB.....WT-D 12:30p Surgery Dept.....WT-D
5 7:00a CV Advisory Board...WT-D 12:30p Cardiology.....WT-D	6	7 7:00a CV Review Conference..WT-D 12:30p CME Conference.....HCC-1&2	8 7:00a Breast Tumor Board...WT-Aud 7:30a Tumor Board.....WT-Aud 12:30p Medicine PI.....WT-B	9 7:00a General Surgery.....WT-C
12 7:30a Physician Alignment..WT-B 12:30p Credentials.....WT-C	13 12:30p Infection Control P&T..WT-D 6:00p MEC.....WT-D	14 7:00a Anesthesia PI.....WT-Aud 7:00a CV Review Conference..WT-D 8:30a TCU.....WT-C 12:30p CME Conference.....HCC-1&2	15 7:00a Breast Tumor Board...WT-Aud 7:30a Tumor Board.....WT-Aud 7:30a ED Committee.....WT-D 12:30p Pediatric Dept.....WT-Aud	16 7:00a Surgery Advisory....WT-D
19 12:00p Burn & Wound.....WT-C	20 12:00p Radiology Dept.....WT-B	21 7:00a CV Review Conference..WT-D 12:30p CME Conference.....HCC-1&2	22 7:00a Breast Tumor Board...WT-Aud 7:30a Tumor Board.....WT-Aud 7:30a Family Practice.....WT-B 12:30p Credentials.....WT-C 12:30p Utilization Mgmt.....WT-D	23
26 7:30a Vascular Medicine.....WT-B 4:00p Bariatric Surgery.....WT-C	27 12:30p Bioethics.....WT-C 12:30p OB/GYN.....WT-Aud	28 7:00a CV Review Conference..WT-D 8:30a Endocrinology.....WT-D	29 7:00a Breast Tumor Board...WT-Aud 7:30a Tumor Board.....WT-Aud	30

CME CONFERENCES



Wednesdays, 12:30 pm
Health Conference Center

Torrance Memorial Medical Center is accredited by the Institute for Medical Quality/California Medical Association (IMQ/CME) to provide continuing medical education for physicians. Torrance Memorial Medical Center takes responsibility for the content, quality, and scientific integrity of this CME activity. Torrance Memorial Medical Center designates this educational activity for a maximum of 1 *AMA PRA Category 1 credit*[™]. Physicians should only claim credit commensurate with the extent of their participation in the activity. This credit may also be applied to the *CME Certification in Continuing Medical Education*.

For up-to-the minute conference information call (310) 784-8776.

April 7, 2010

"H1N1 Influenza Update"
Laurene Mascola, M.D.
L.A. County Dept. of Health Services
Commercial Support: None

April 14, 2010

"Lung Cancer"
Frederic Grannis, M.D.
U.C. San Diego School of Medicine
Commercial Support: None

April 21, 2010

"Management of Patients with Renal Failure"
Gaurang Shah, M.D.
U.C. Irvine School of Medicine
Commercial Support: None

April 28, 2010

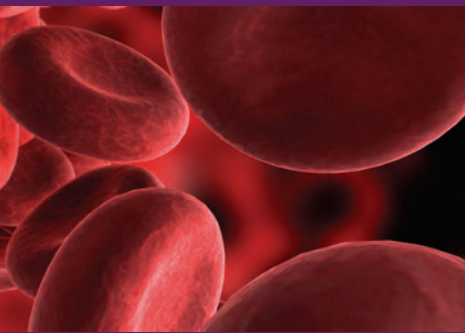
NO CONFERENCE

May 5, 2010

"Vaginal Birth vs. Cesarean Section"
Kimberly Gregory, M.D.
UCLA School of Medicine
Commercial Support: None

May 12, 2010

"Radiation & Medical Imaging"
Patrick Colletti, M.D.
USC School of Medicine
Commercial Support: None



Blood Product Guidelines: Autologous Blood

Autologous Whole Blood: donated at Torrance Memorial Blood Donor Center is supplied as whole blood. The whole blood unit can be made into packed cells upon request. Autologous units may also be donated at other donation facilities and shipped to Torrance Memorial Medical center Transfusion Service. These autologous units may be packed cells or whole blood.

Autologous units require a type and crossmatch; turn around time is 1 hour. Autologous units remain crossmatched on the patient during the admission. Autologous units expire 35 days from collection and are held in the Transfusion Service until expiration.

Autologous units are drawn from patients in the Blood Donor Center. A written physician order is required. Donations must be at least 4 days before surgery.

Physician Roster Updates

Address/Phone/Fax Updates

Alice Diego Malit, M.D.
23517 S. Main St., Ste. 101
Carson, CA 90745
Phone: (310) 549-2840
Fax (310) 549-3115
Specialty: Pediatrics

Deepjot Singh, M.D.
3400 Lomita Blvd., Ste. 500
Torrance, CA 90505
Specialty: OB/GYN

Stanley Klein, M.D.
23451 Madison St., Ste. 340
Torrance, CA 90505
Specialty: General Surgery

Clark Soderlund, M.D.
Phone: (310) 214-5722
Fax: (310) 793-4657
Specialty: Internal Medicine

Barry Steinmetz, M.D.
Phone: (562) 933-6730
Specialty: Pediatrics

Ajanta Naidu, M.D.
Phone: (310) 791-2890
Fax: (310) 791-2895
Specialty: Pediatric Endocrinology

Mark Thompson, M.D.
Phone: (310) 793-4671
Specialty: Internal Medicine

Leave of Absence

Amy Harrison, M.D.
Specialty: Pediatrics

Roger Dumke, M.D.
Specialty: Vascular Surgery

Resignations

Julia Song, M.D.
Specialty: Ophthalmology

Alice Song, M.D.
Specialty: Ophthalmology

Mandeep Singh, M.D.
Specialty: Pediatrics

Gary Schmid, D.D.S
Specialty: Dentistry

Jeffrey Ostriker, M.D.
Specialty: Family Practice

Raisa Osipov, M.D.
Specialty: Family Practice

Parag Mehta, M.D.
Specialty: Neurology

John Link, M.D.
Specialty: Oncology, Hematology

Marvin Gordon, M.D.
Specialty: Ophthalmology

Richard Glimp, M.D.
Specialty: Infectious Disease

Norman Cantor, M.D.
Specialty: Otolaryngology

Retired

Louis Vazquez, M.D.
Specialty: Orthopedics

Howard Resin, M.D.
Specialty: Gastroenterology

Nona Emery, M.D.
Specialty: Family Practice

The Medical Staff Newsletter **Progress Notes** is published monthly for the Medical Staff of Torrance Memorial Medical Center.

David Rand, M.D.
Chief of Staff

Robin S. Camrin, CPMSM, CPCS
*Administrator, Medical Staff Services
Performance Improvement*

Welcome

New Providers on Staff



AFSHAN ABBASI, M.D.
Neonatology
3330 Lomita Blvd. - Neonatology
Torrance, CA 90505
Phone: (310) 517-4663
Fax: (310) 784-8722



STEVEN L. LEE, M.D.
Pediatric Surgery
21840 S. Normandie, Ste. 600
Torrance, CA 90509
Phone: (310) 222-5189
Fax: (310) 782-6786



SHEILA C. BARBARINO, M.D.
Ophthalmology
23441 Madison St., Ste. 120
Torrance, CA 90505
Phone: (310) 379-6708
Fax: (310) 378-6395



MARIUS SAINES, M.D.
Vascular Surgery
21350 Hawthorne Blvd., Ste. 270
Torrance, CA 90503
Phone: (310) 673-6950
Fax: (310) 671-9989



DIANNE S. CHEUNG, M.D.
Endocrinology
20911 Earl St., Ste. 340
Torrance, CA 90503
Phone: (310) 542-6333
Fax: (310) 542-4695



MILENA SHAKHBAZOVA, M.D.
Family Practice
3333 Skypark Dr., Ste. 100
Torrance, CA 90505
Phone: (310) 784-6300
Fax: (310) 784-6313



JULIE L. GASPERINI, M.D.
Ophthalmology
4300 Long Beach Blvd., Ste. 300
Long Beach, CA 90807
Phone: (562) 984-7024
Fax: (562) 428-7394



LYNDA STOODLEY, N.P.
Cardiothoracic Nurse Practitioner
23451 Madison St., Suite 300 Bldg. 7
Torrance, CA 90505
Phone: (310) 378-8400
Fax: (310) 378-2455



JOHN B. HOANG, D.O.
Internal Medicine
3330 Lomita Blvd. - TMHA 1st Floor
Torrance, CA 90505
Phone: (310) 891-6623
Fax: (310) 891-6673



MATTHEW J. THOMPSON, P.A.
Physician Assistant
23451 Madison St., Suite 300
Torrance, CA 90505
Phone: (626) 483-2799
Fax: (626) 963-0594



HAI X. LE, M.D.
Internal Medicine
3330 Lomita Blvd. - HCP 1st Floor
Torrance, CA 90505
Phone: (310) 784-8770
Fax: (310) 784-4991



Medical Staff Services

3330 Lomita Boulevard
Torrance, CA 90505
(310) 517-4616 ph
(310) 784-8777 fax
www.TorranceMemorial.org

ProgressNotes

Vol. 2 Issue 4

April 2010

MONTHLY
MEDICAL
STAFF
NEWSLETTER

ProgressNotes

TORRANCE MEMORIAL MEDICAL CENTER

*Torrance Memorial's
Planned New Patient Tower*

